

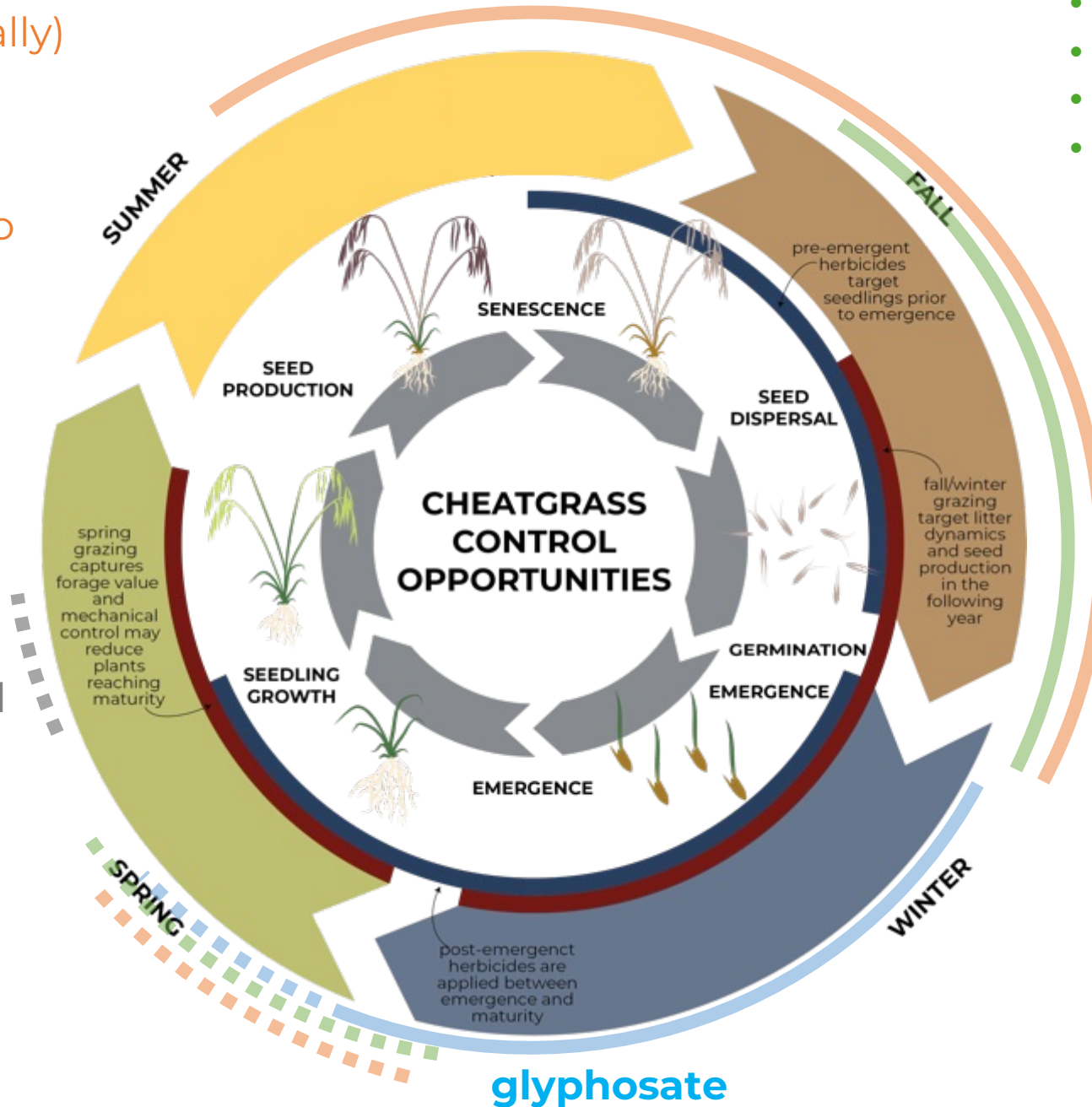
- Pre-emergent only
- Nonselective (chemically)
- Long residual
- Broad application window
- Prior to germination to achieve control in first year

- Narrow timing window affects seed viability
- Selective
- Exploratory

**aminopyralid**

- Post-emergent
- Nonselective
- Short-residual
- Low rates, apply when desirables are dormant

**indaziflam**



- Pre and post
- Selective
- Moderate residual
- Low rates, apply when desirables are dormant or when temporary damage may be tolerated

**imazapic  
rimsulfuron  
sulfosulfuron**

**glyphosate**

# Imazapic



Designed by: IMIAGINE & Mariah McIntosh, Intermountain West Joint Venture

# Indaziflam



# Imazapic + Indaziflam



treatment year

1 year after

2 years after

3+ years after?